

Lüftungsöffnungen Lüftungsöffnungen

Stp.03
11,92 m²
WHG-03

Fahrbereich
88,88 m²

Stp.01
16,66 m²
WHG-01

Technik
11,50 m²
Mehrsparte

Keller 06
11,52 m²
WHG-06

Stp.04
11,92 m²
WHG-04

Stp.02
16,39 m²
WHG-02

Keller 04
7,19 m²
WHG-04

Keller 03
7,19 m²
WHG-03

Stp.05
12,93 m²
WHG-05

Tiefgarage
374,01 m²
+66,64 OKFF

Stp.07
13,81 m²
WHG-02

Aufzug
Aufzug entsprechend DIN
EN 81-70:2005-09

Keller 01
9,10 m²
WHG-01

Keller 02
9,27 m²
WHG-02

Stp.06
14,44 m²
WHG-06

Gittertor
Drainrinne-AKO

Schleuse

Müll
13,65 m²

Keller 05
10,05 m²
WHG-05

Keller 07
13,94 m²
WHG-07

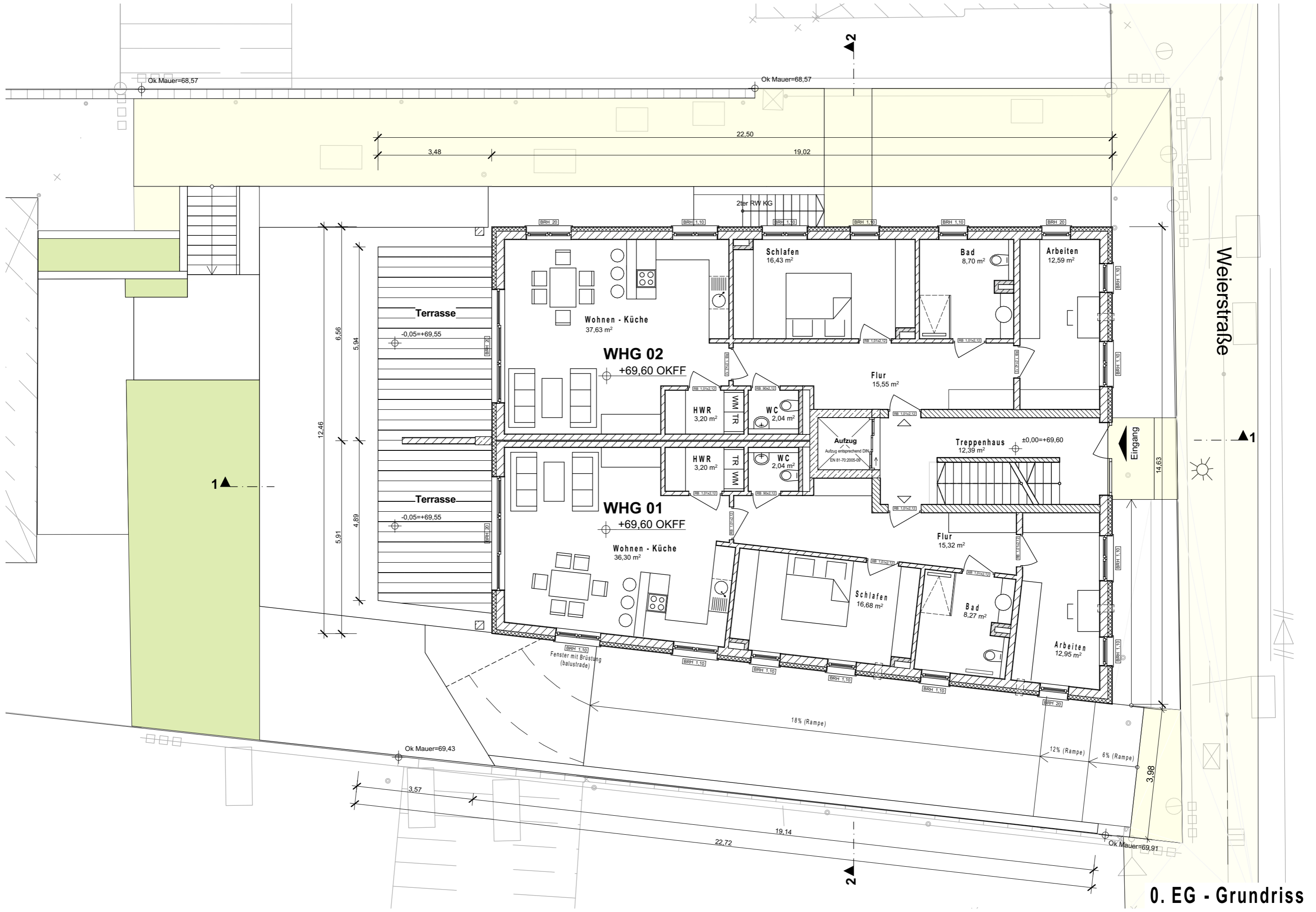
Fahrräder
17,91 m²
GA I Flachdach
4,07⁵m x 6,16⁵m
70cm tiefer
als die Decke der Tiefgarage

18% (Rampe)

12% (Rampe)

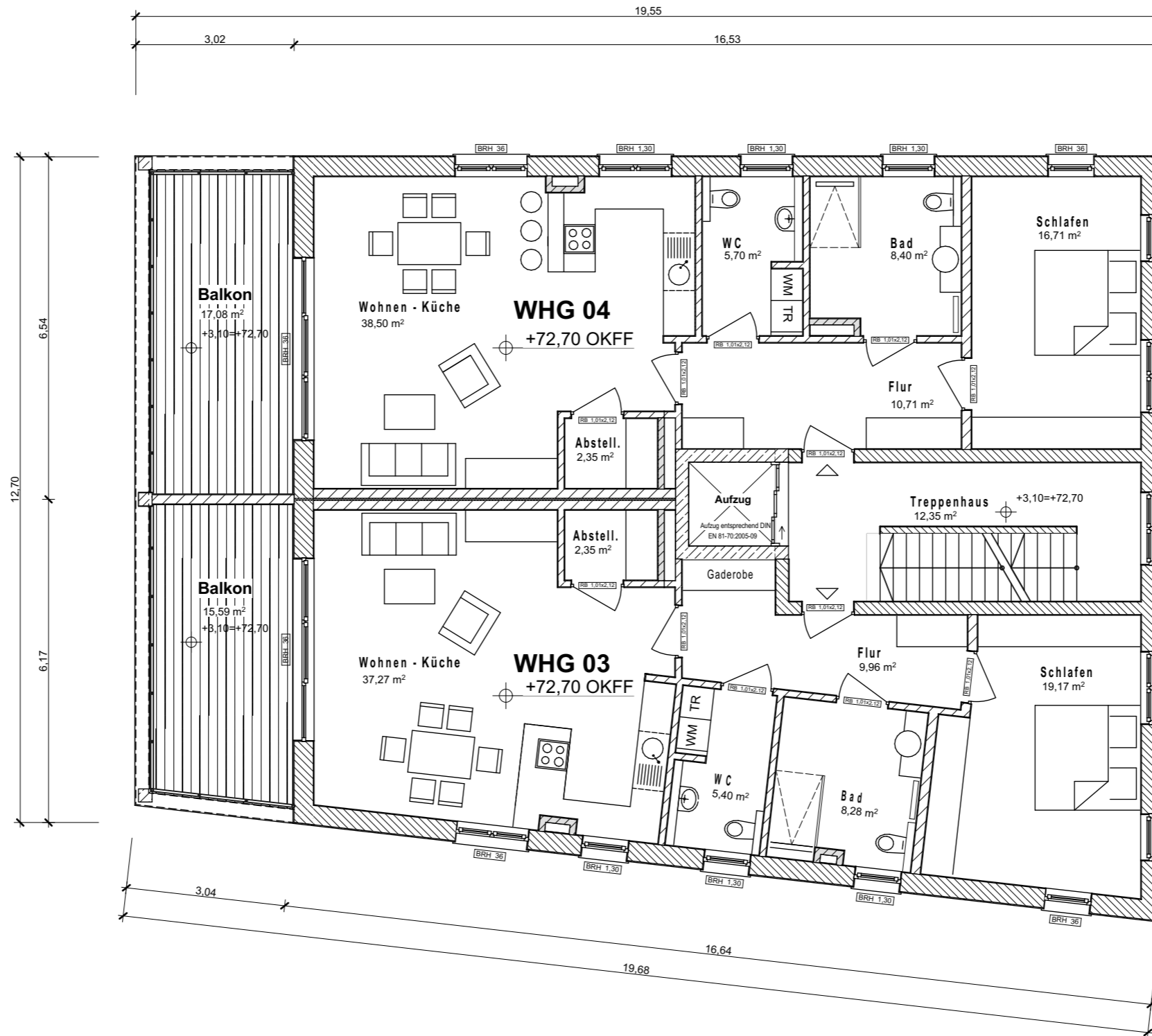
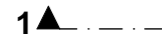
6% (Rampe)

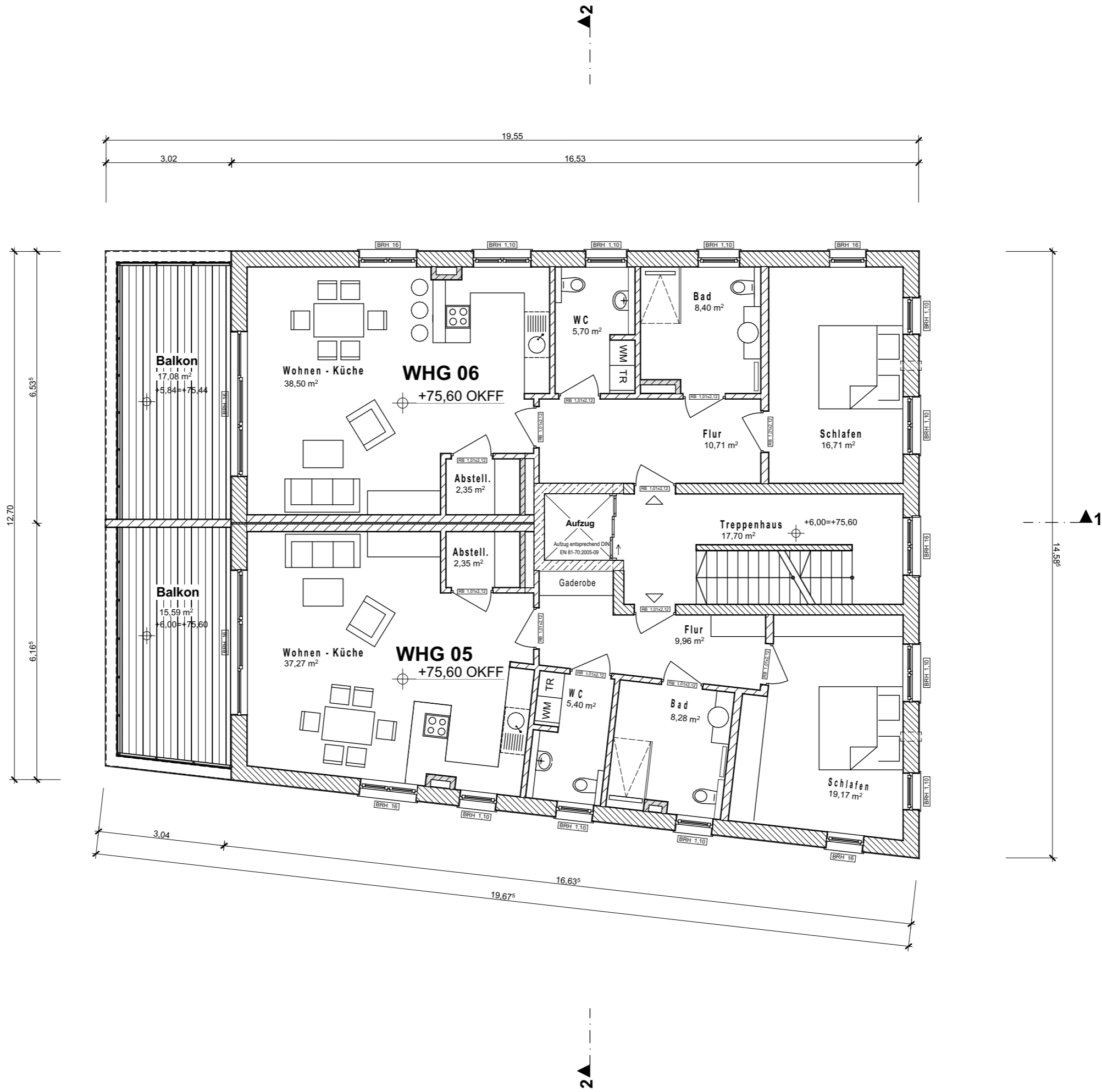
-1. KG - Grundriss



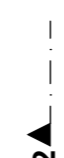
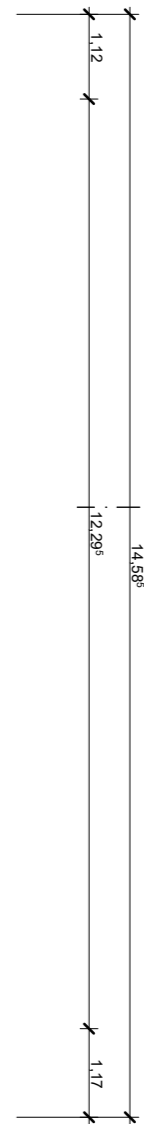
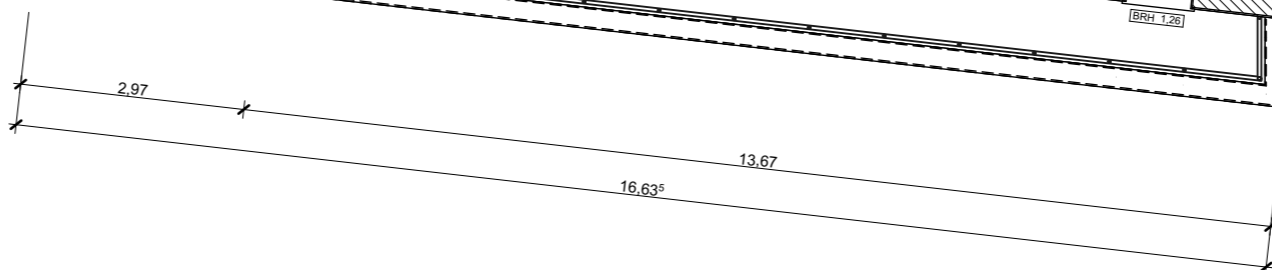
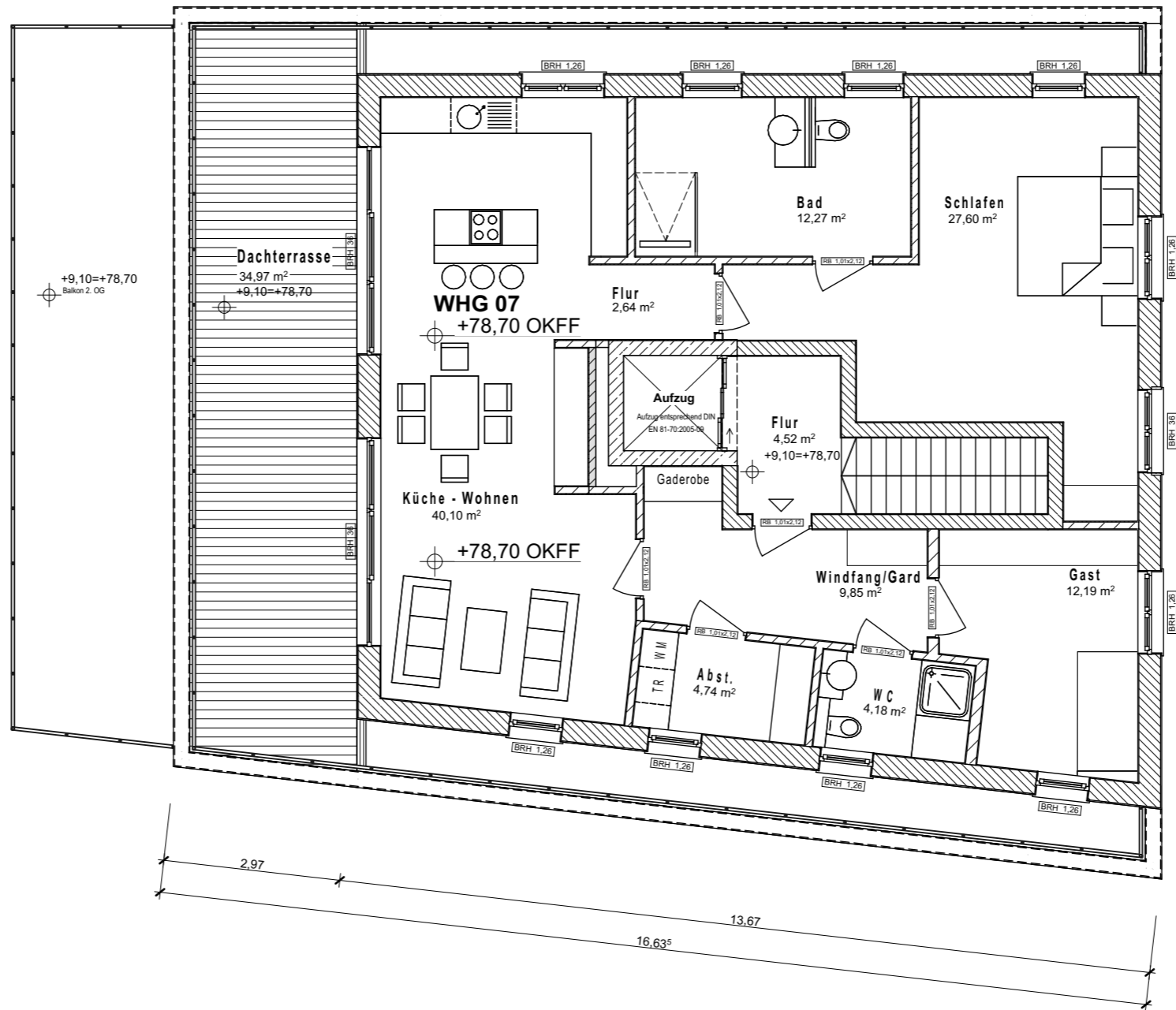
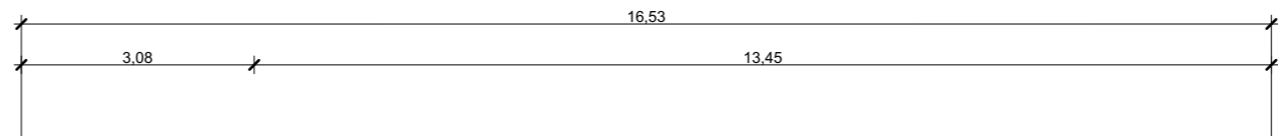
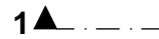
Weierstraße

0. EG - Grundriss

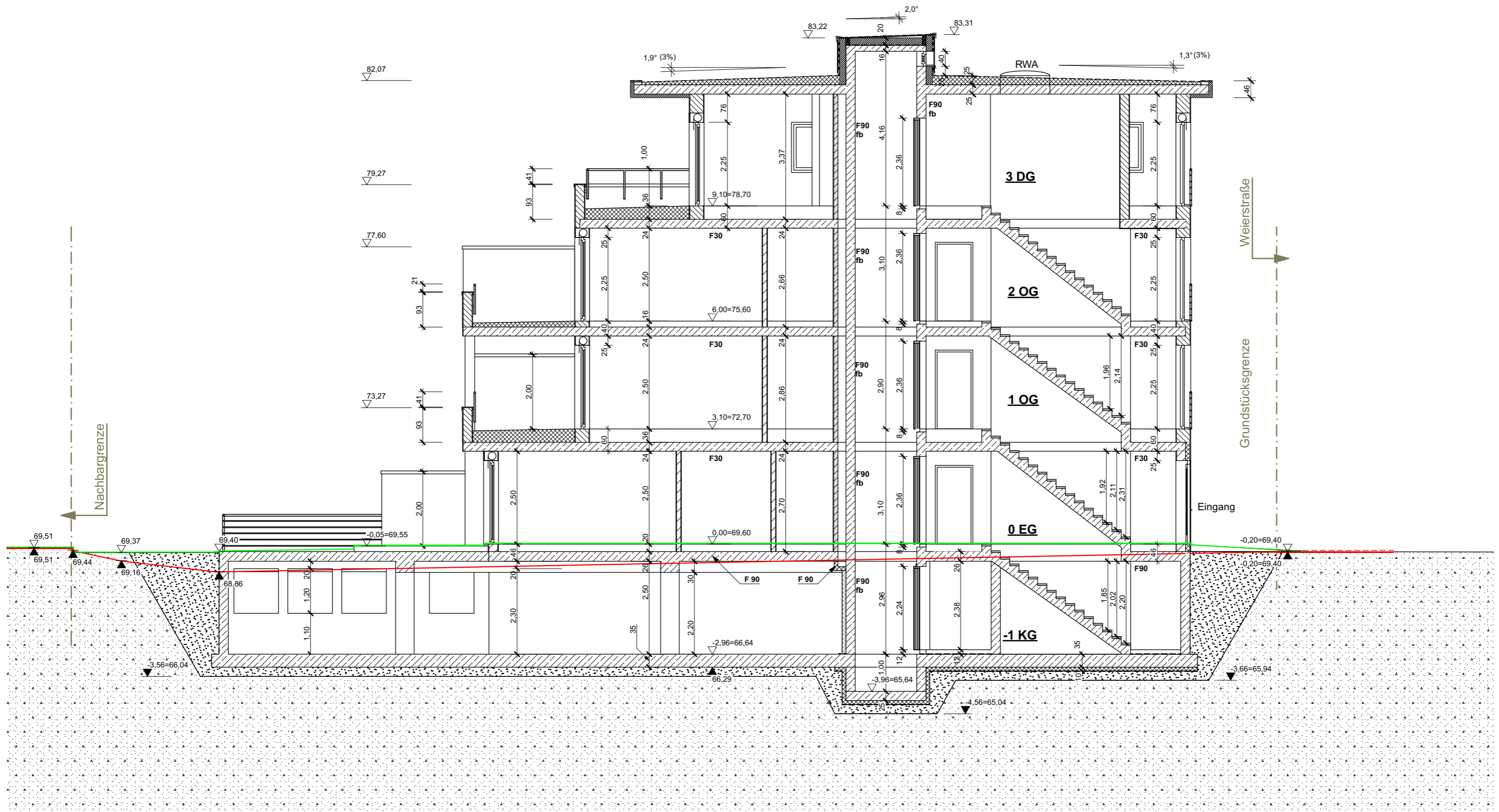




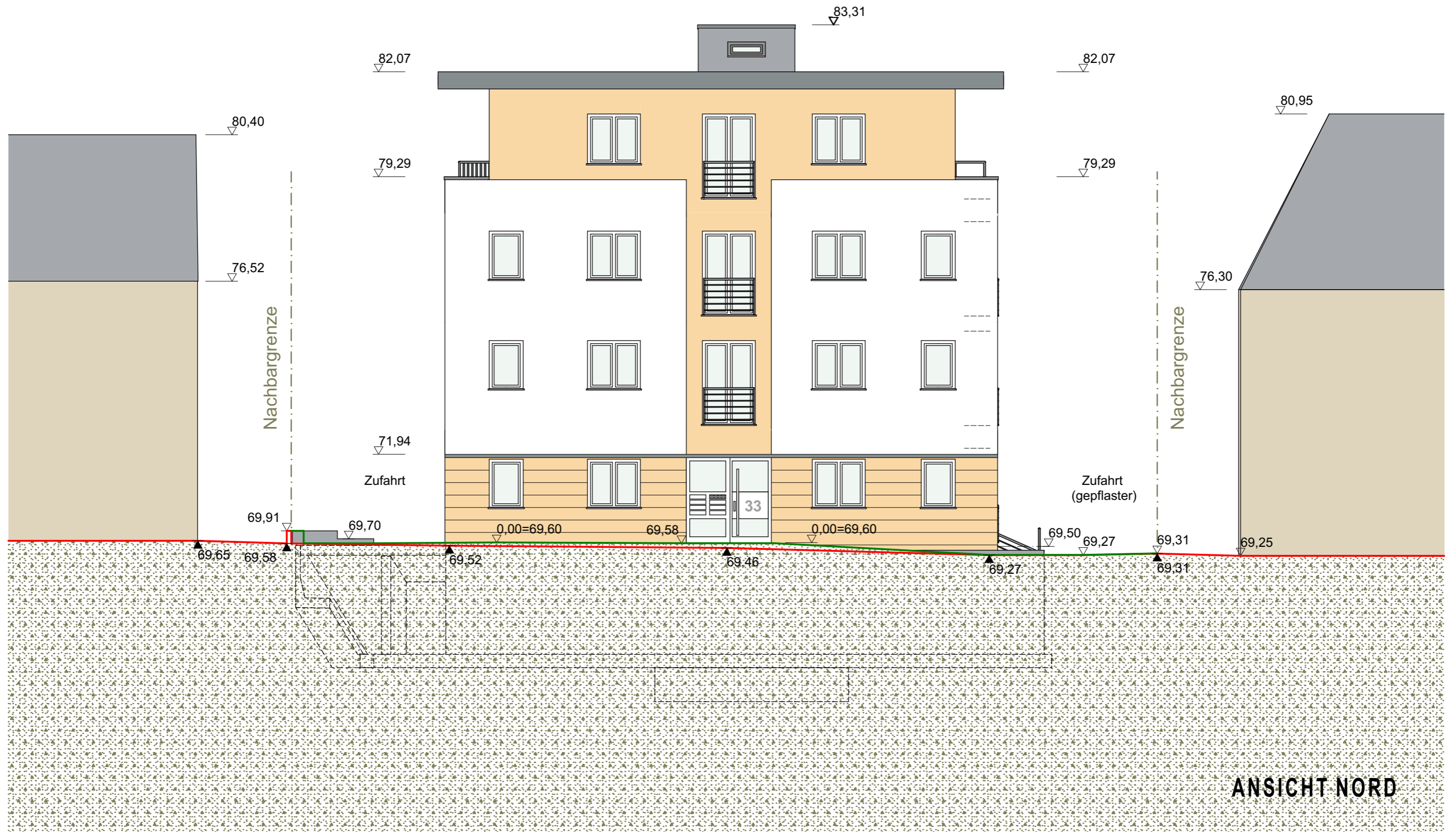
2. OG - Grundriss

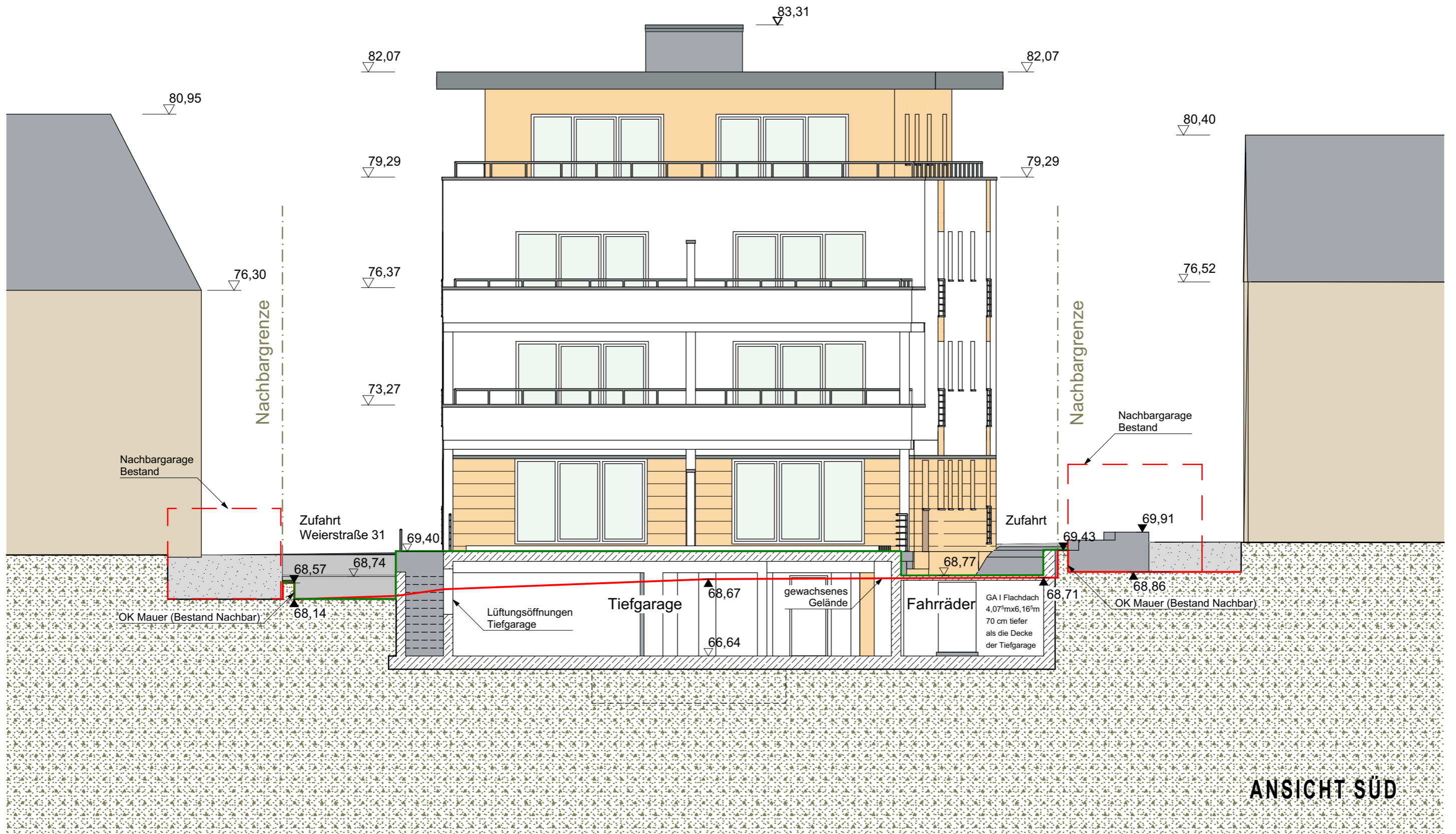


3. DG - Grundriss

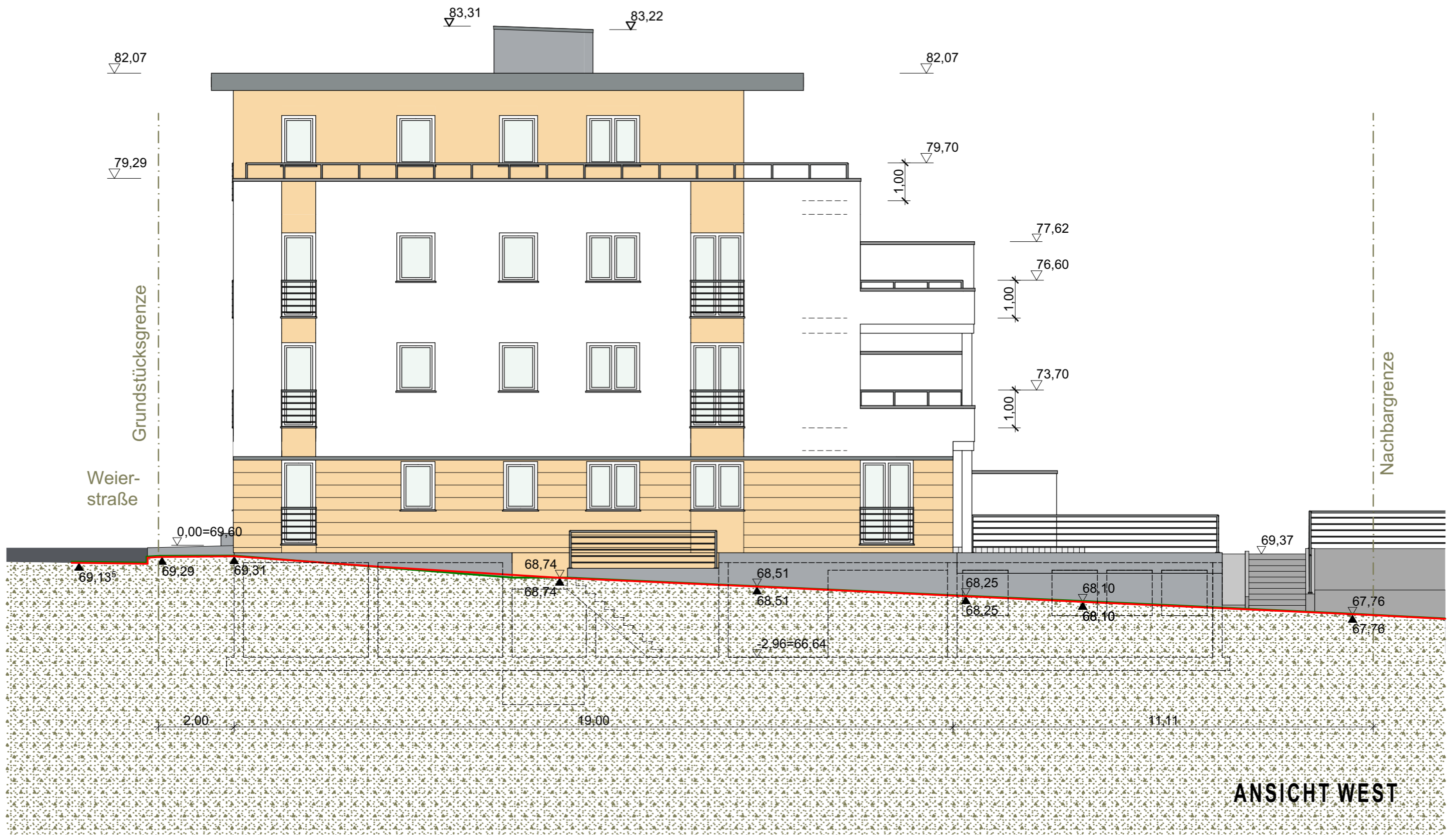


Schnitt 1-1

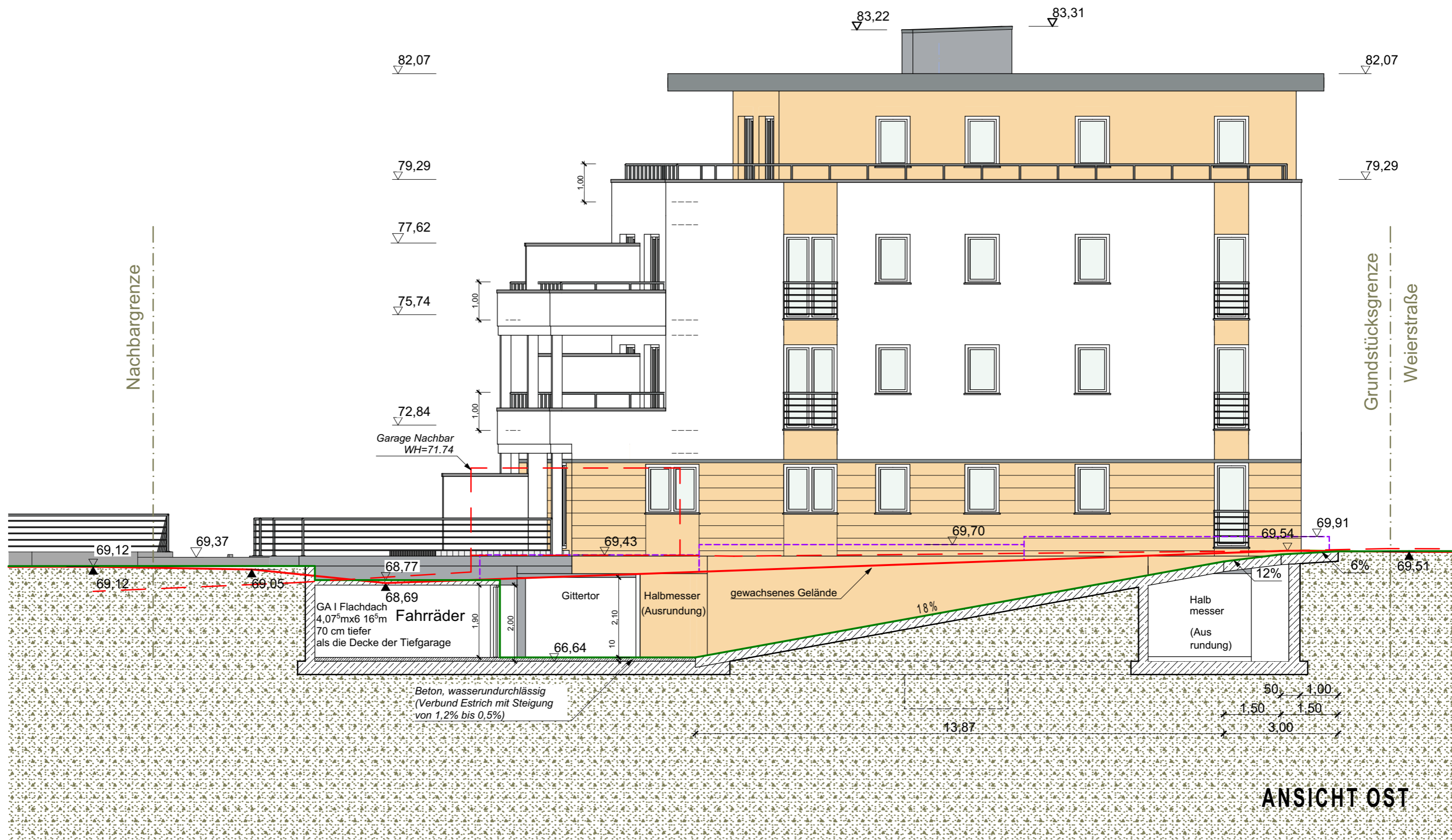




ANSICHT SÜD



ANSICHT WEST



ANSICHT OST