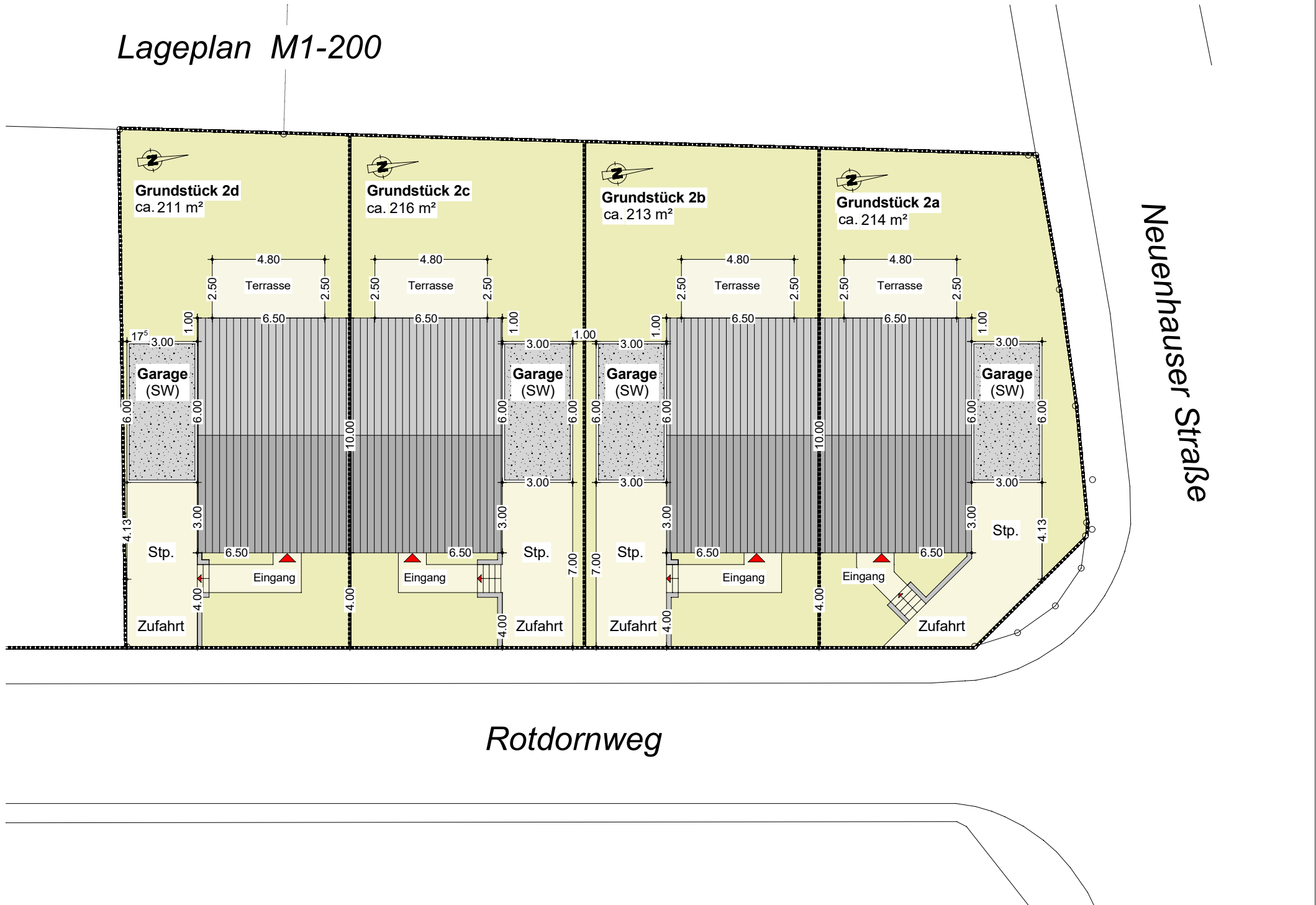


# Lageplan M1-200



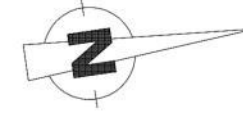






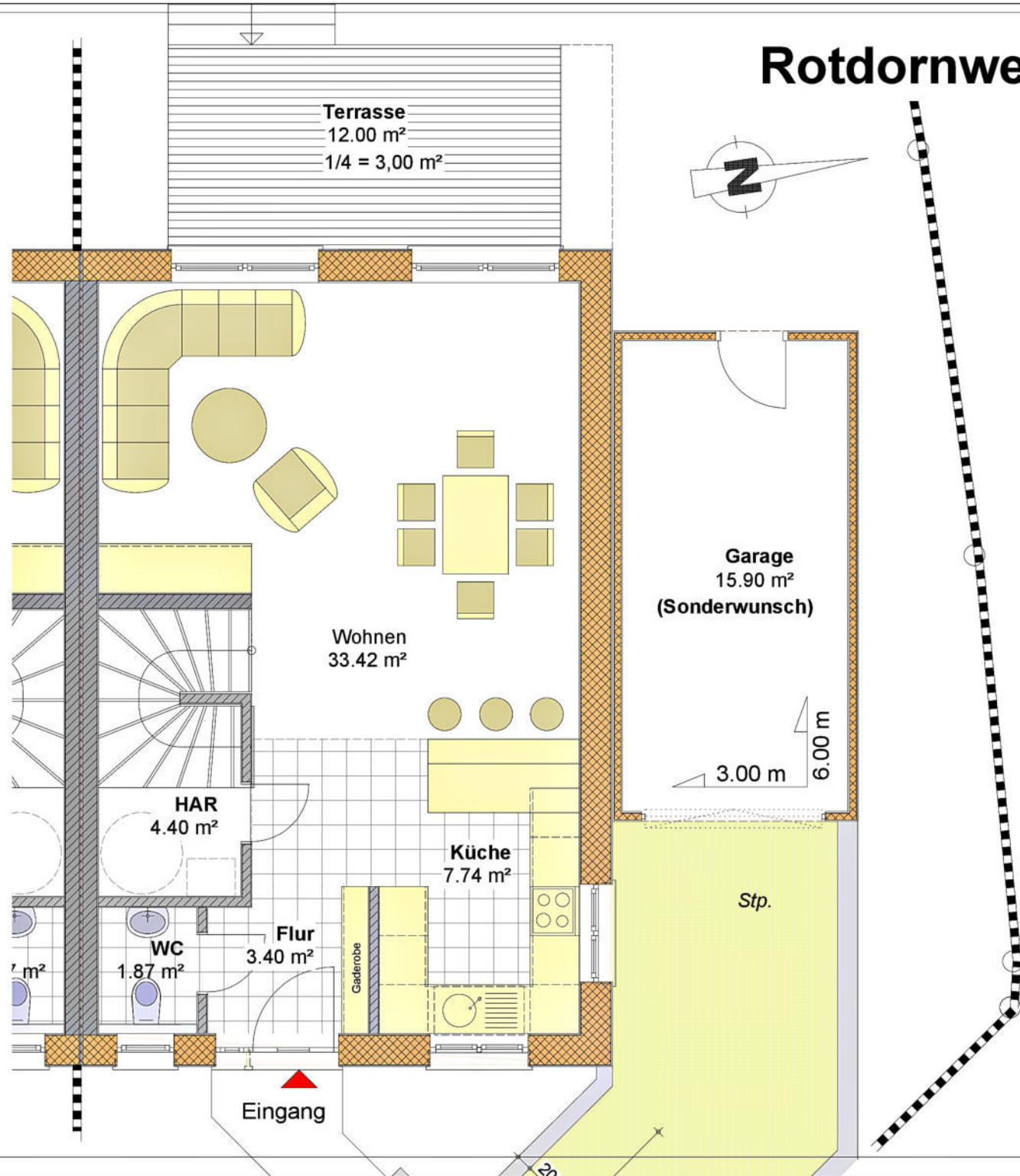
# Erdgeschoss

Rotdornweg 2a



## Erdgeschoss:

WC	1.87 m <sup>2</sup>
HAR	4.40 m <sup>2</sup>
Flur	3.40 m <sup>2</sup>
Küche	7.74 m <sup>2</sup>
Wohnen	33.42 m <sup>2</sup>
Terrasse	3.00 m <sup>2</sup>
<b>Gesamt:</b>	<b>50.83 m<sup>2</sup></b>



Terrasse  
12.00 m<sup>2</sup>  
1/4 = 3,00 m<sup>2</sup>

Garage  
15.90 m<sup>2</sup>  
(Sonderwunsch)

Wohnen  
33.42 m<sup>2</sup>

HAR  
4.40 m<sup>2</sup>

Küche  
7.74 m<sup>2</sup>

WC  
1.87 m<sup>2</sup>

Flur  
3.40 m<sup>2</sup>

Stp.

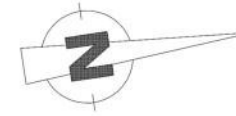
Eingang





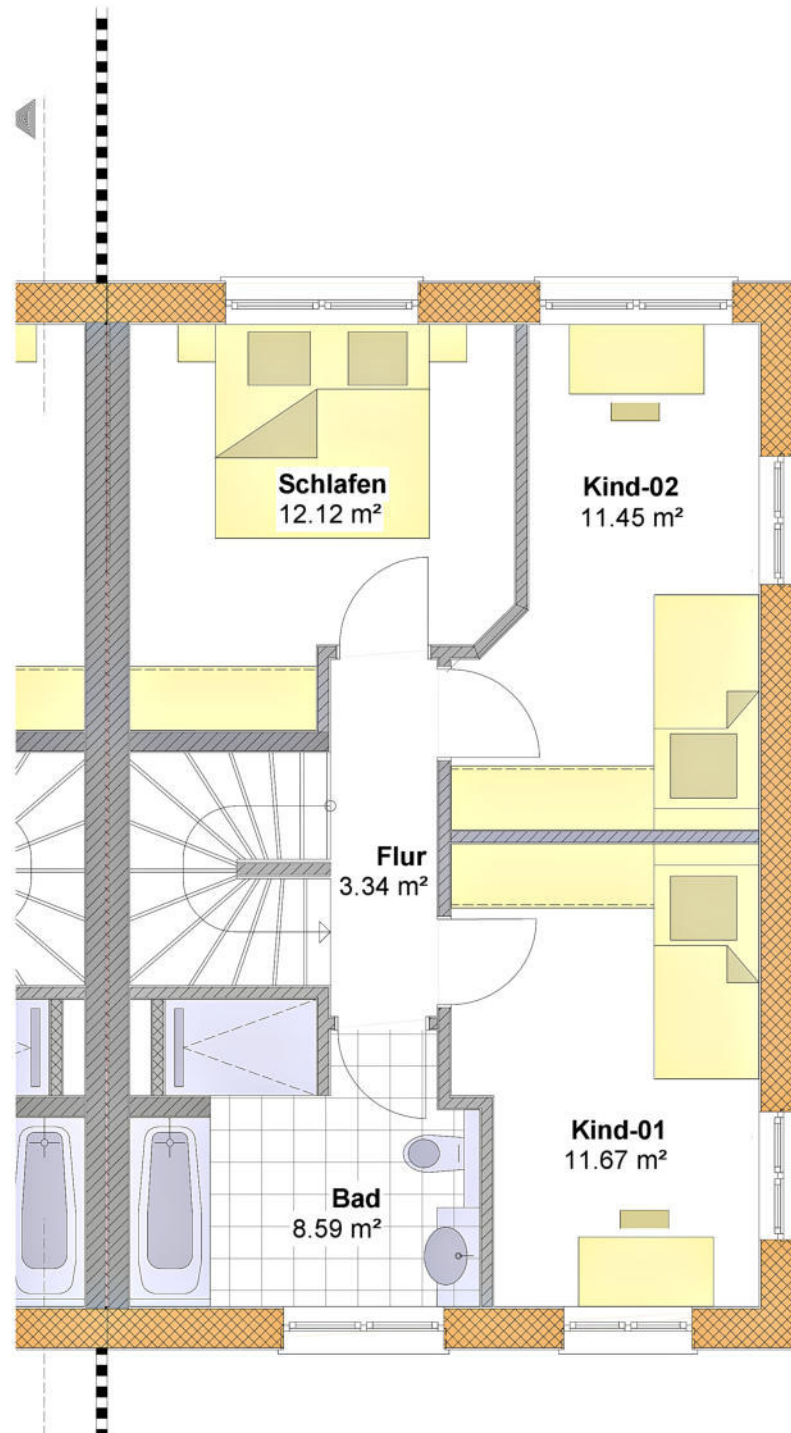
# Obergeschoss

Rotdornweg 2a



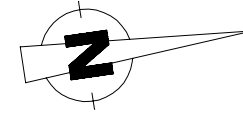
## Obergeschoss:

Schlafen	12.12 m <sup>2</sup>
Kind-01	11.67 m <sup>2</sup>
Kind-02	11.45 m <sup>2</sup>
Bad	8.59 m <sup>2</sup>
Flur	3.34 m <sup>2</sup>
<b>OG-Gesamt:</b>	<b>47.17 m<sup>2</sup></b>



# Dachgeschoss

Rotdornweg 2a



## Dachgeschoss:

Studio 30.23 m<sup>2</sup>

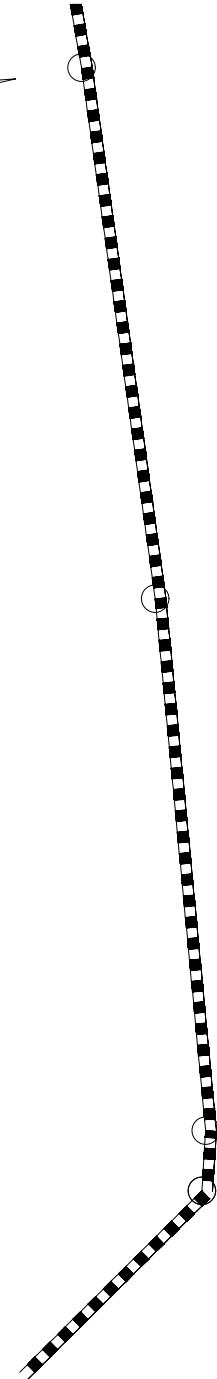
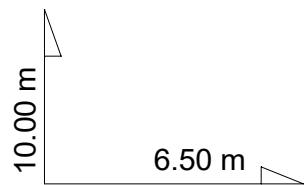
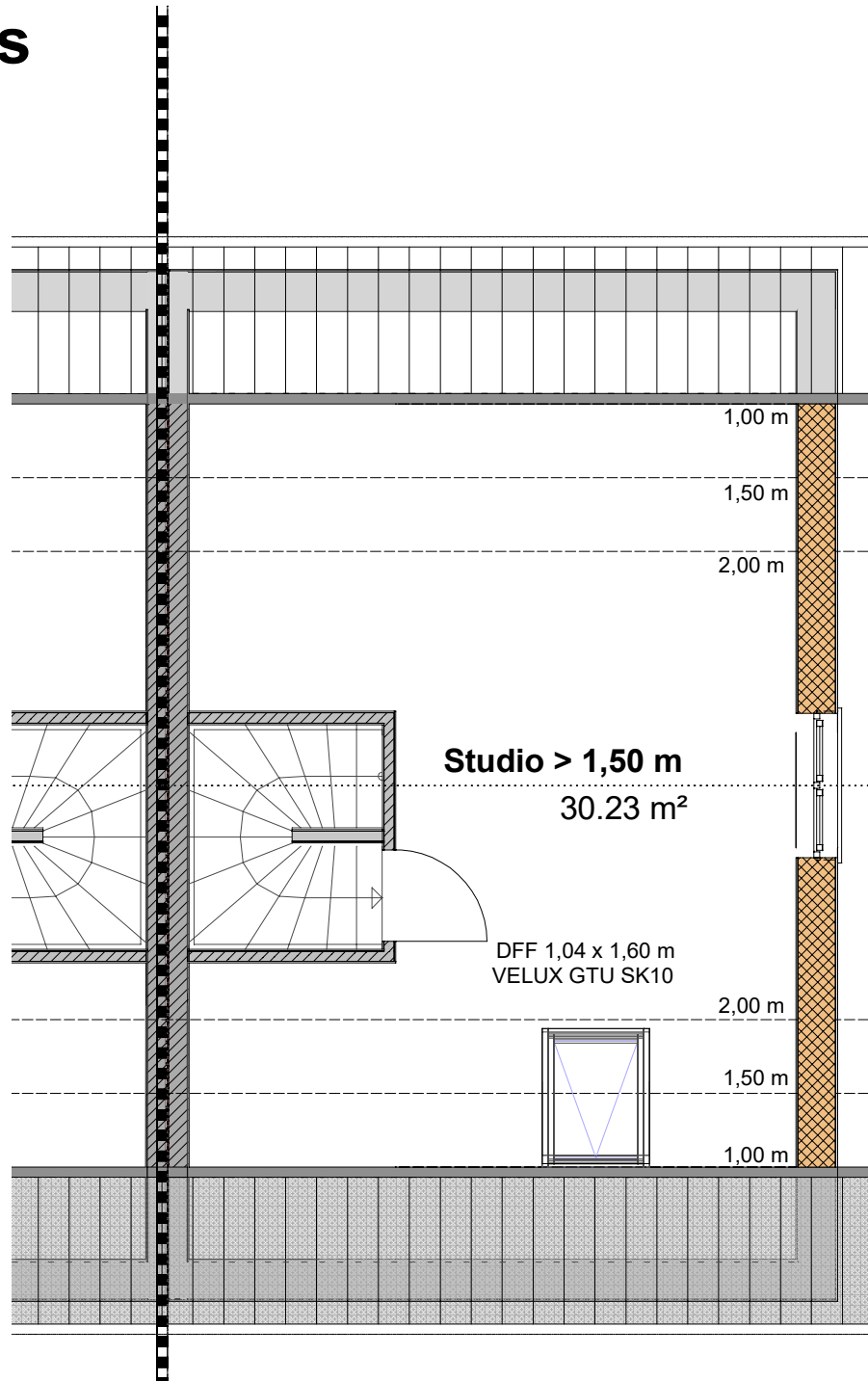
DG-Gesamt: 30.23 m<sup>2</sup>

EG-Gesamt 50.83 m<sup>2</sup>

OG-Gesamt: 47.17 m<sup>2</sup>

DG-Gesamt: 30.23 m<sup>2</sup>

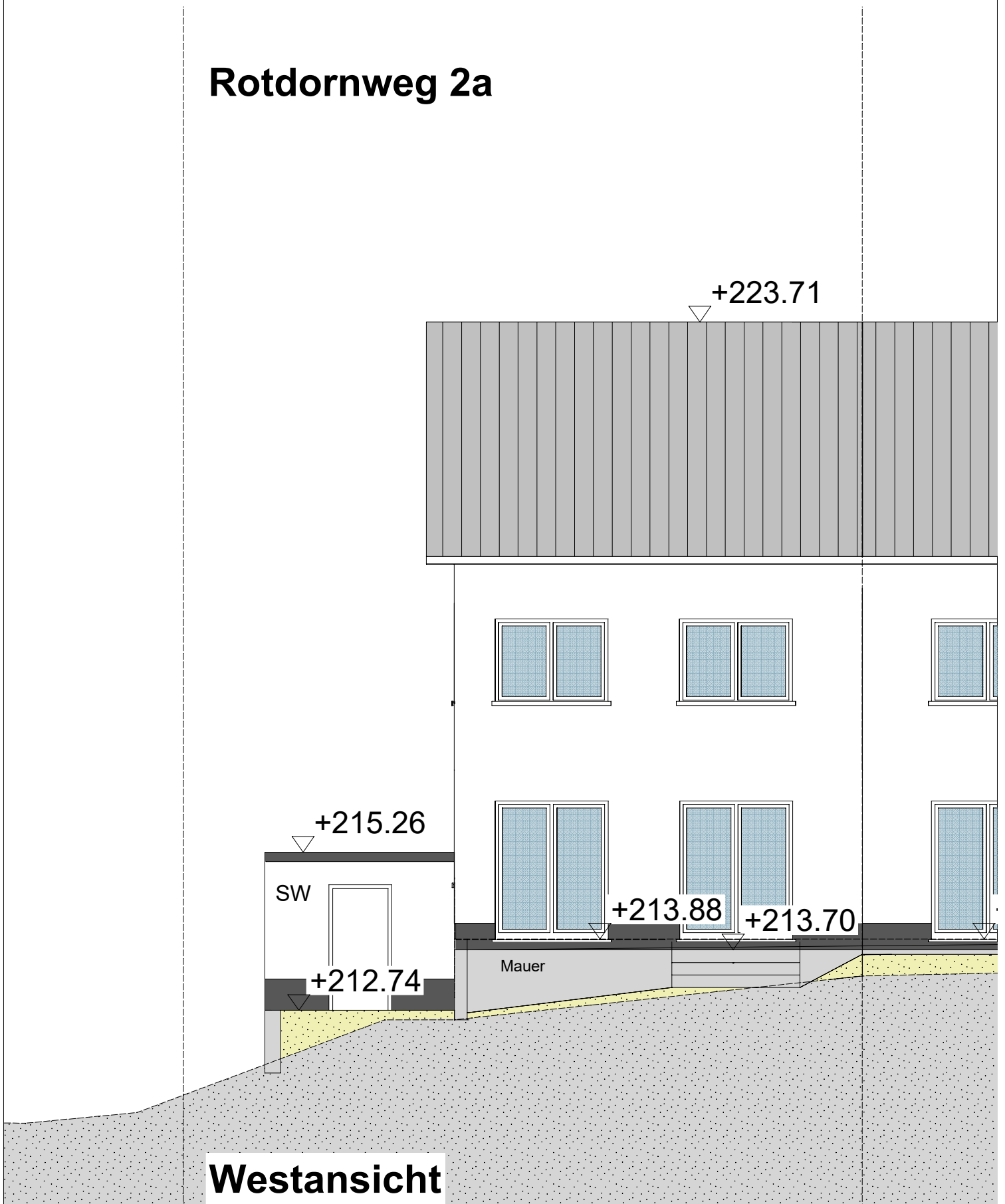
Gesamt: 128.23 m<sup>2</sup>



# Rotdornweg 2a

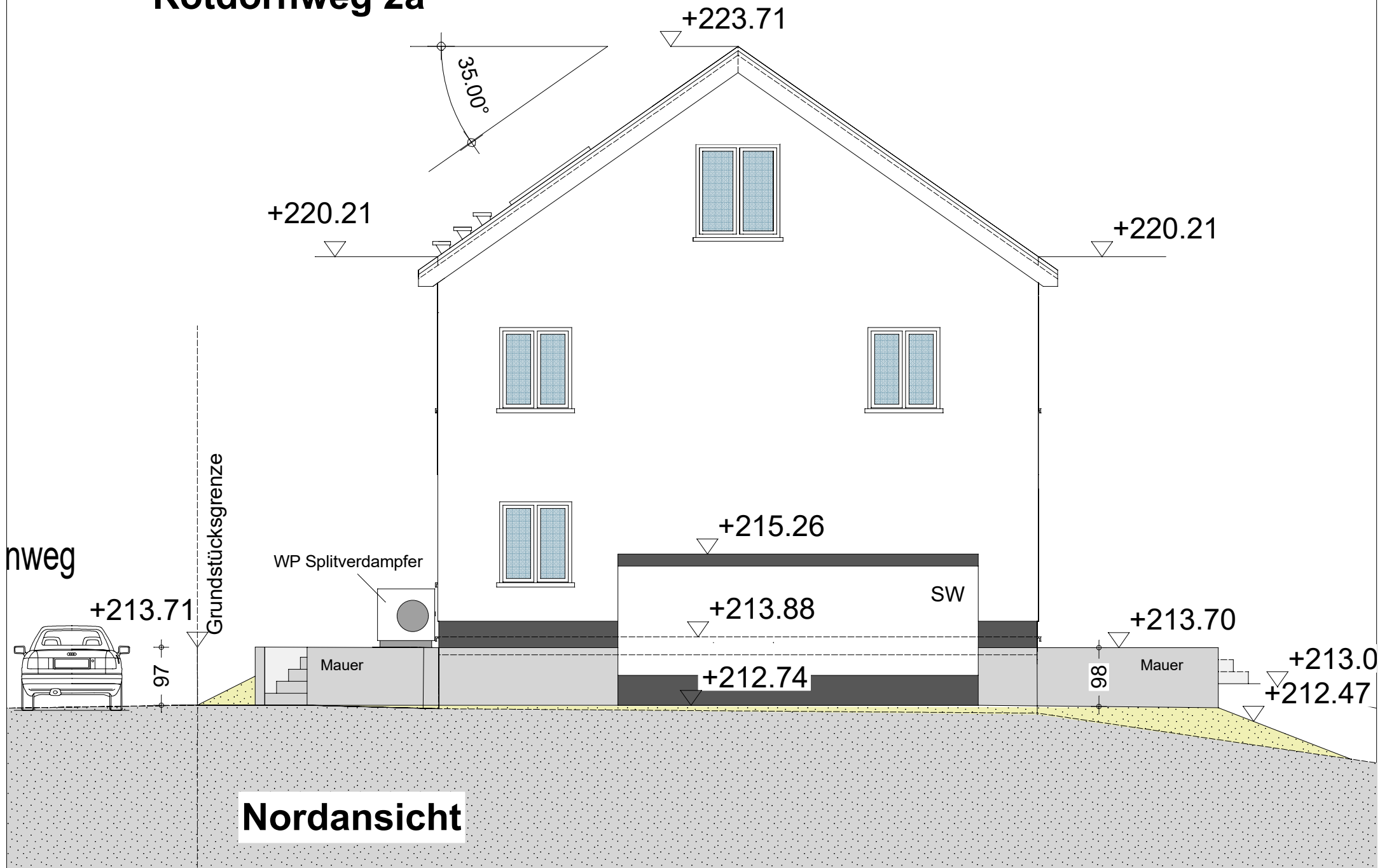


# Rotdornweg 2a





# Rotdornweg 2a



**Nordansicht**

Rotdornweg 2a

Schnitt A-A

